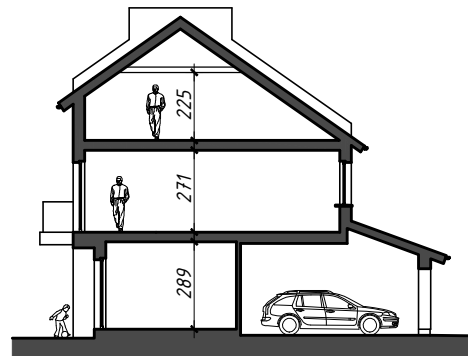
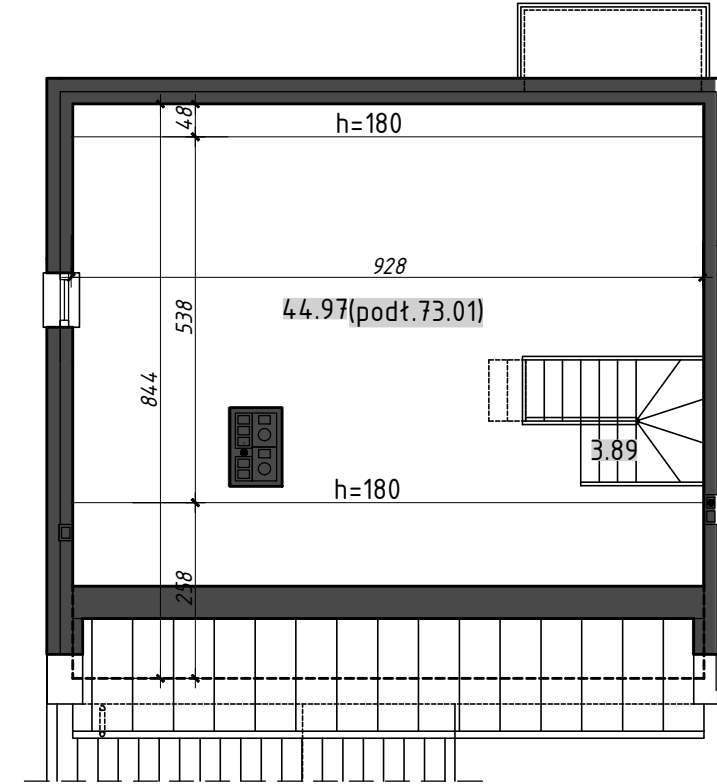
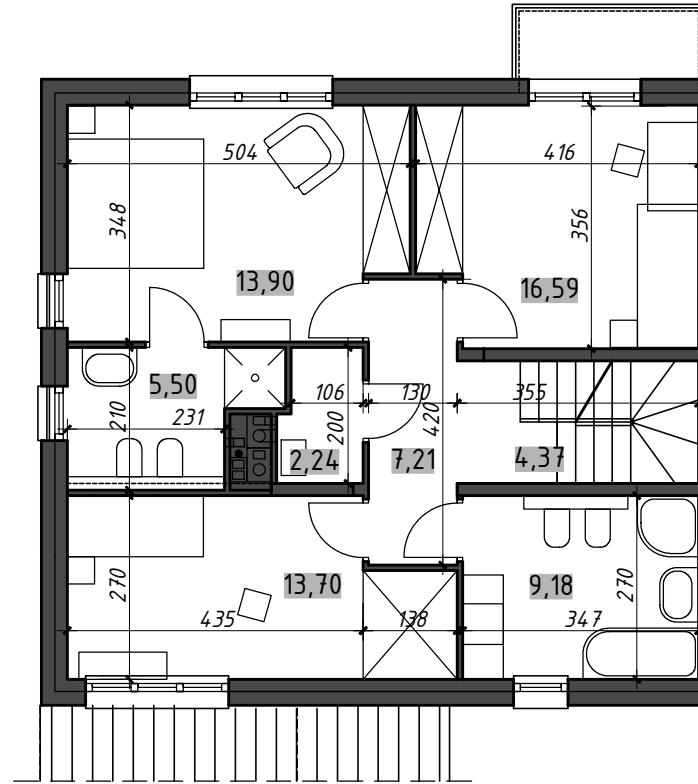
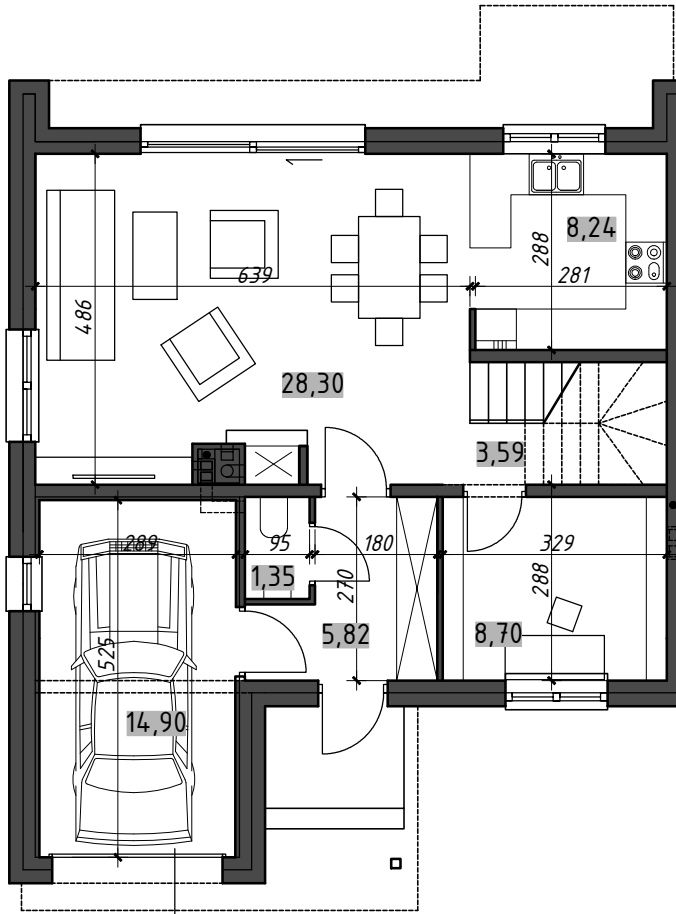


OSIEDLE DOMÓW SZEREGOWYCH JÓZEFOSŁAW UL. OGRODOWA 19A



DOM TYP (C2)

ZESTAWIENIE POWIERZCHNI:

parter	56,00m ²
piętro	71,98m ²
strych	48,86 (76,90)m ²
garaż	14,90m ²
RAZEM	191,74m² (219,78m²)
balkon	2.94m ²