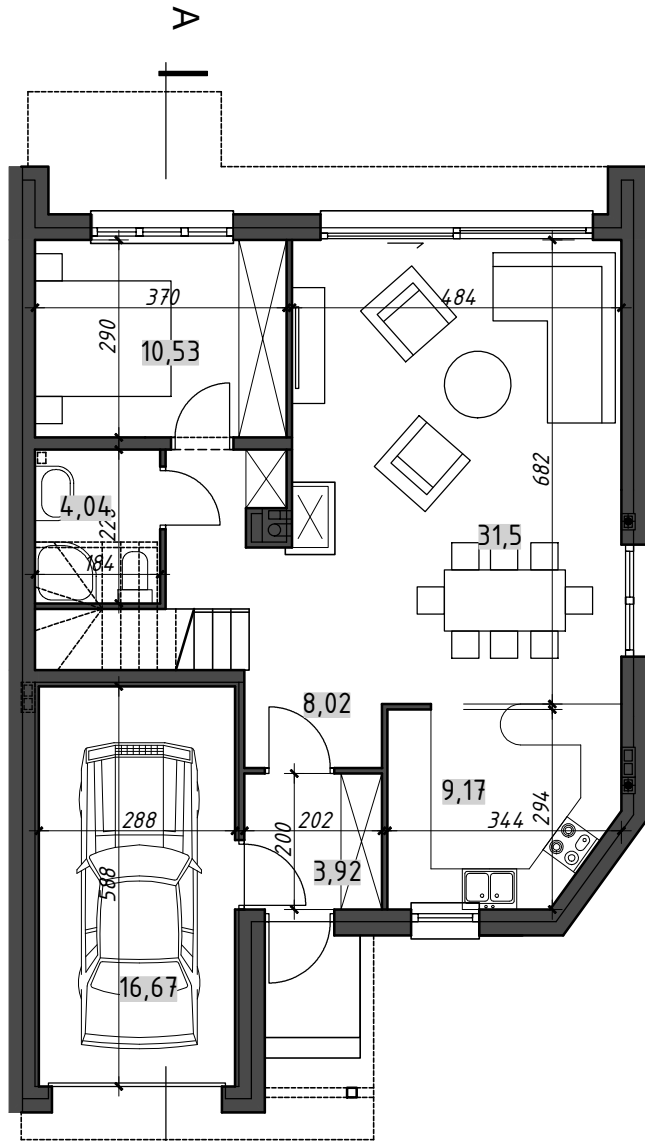
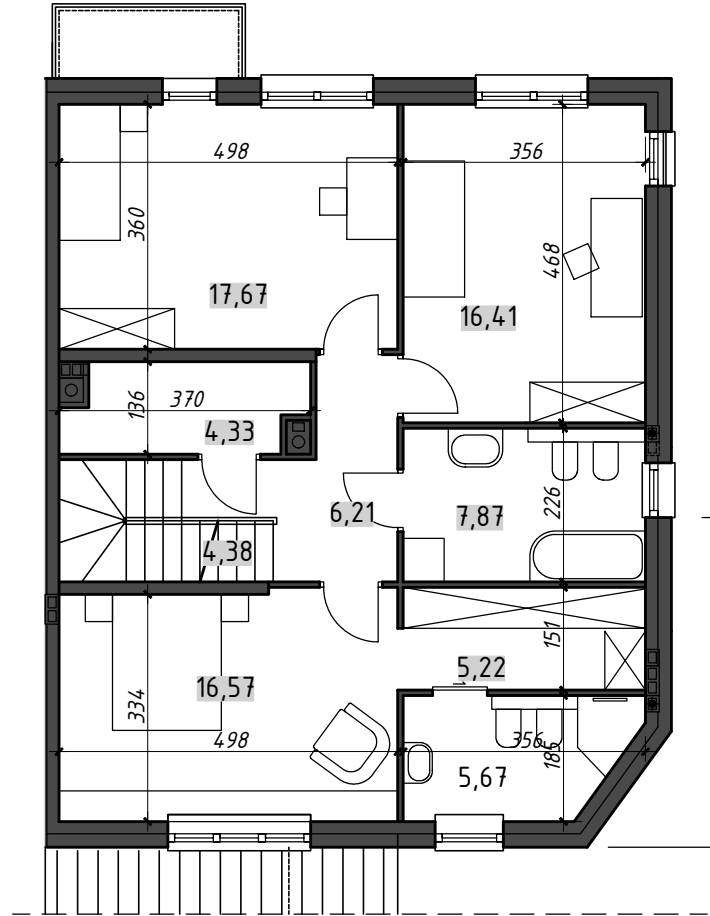


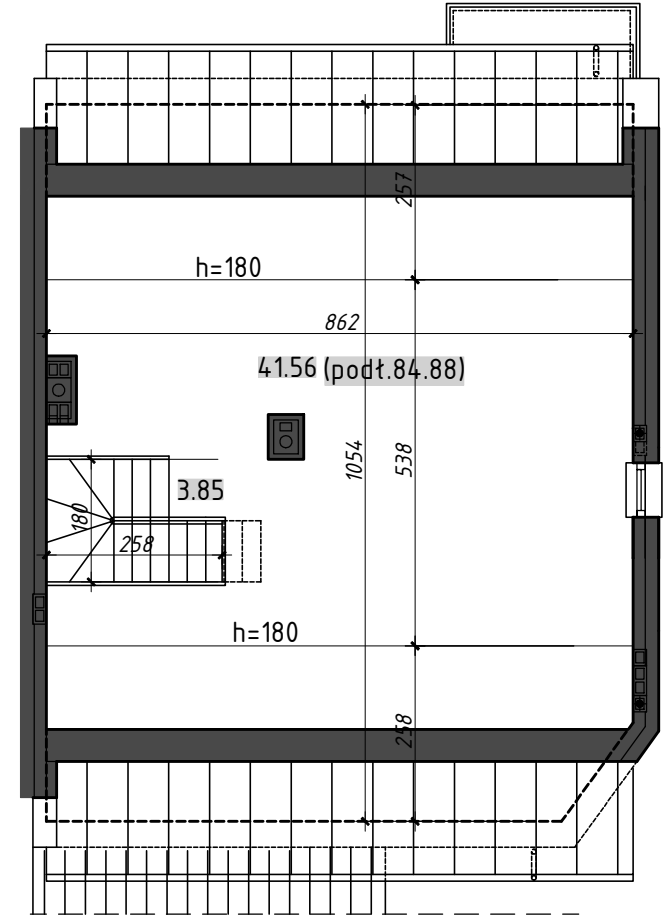
OSIEDLE DOMÓW SZEREGOWYCH JÓZEFOSŁAW UL. OGRODOWA 19A



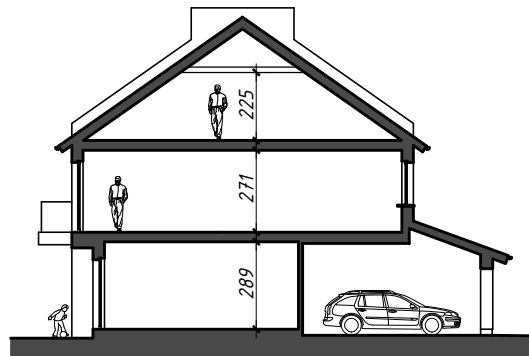
parter



piętro



strych



przekrój A-A (schemat)

DOM TYP (B3)

ZESTAWIENIE POWIERZCHNI:

parter	67,18m <sup>2</sup>
piętro	84,33m <sup>2</sup>
strych	45,41m <sup>2</sup> (88,73)m <sup>2</sup>
garaż	16,67m <sup>2</sup>
<b>RAZEM</b>	<b>213,59m<sup>2</sup> (256,91m<sup>2</sup>)</b>
balkon	2.94m <sup>2</sup>