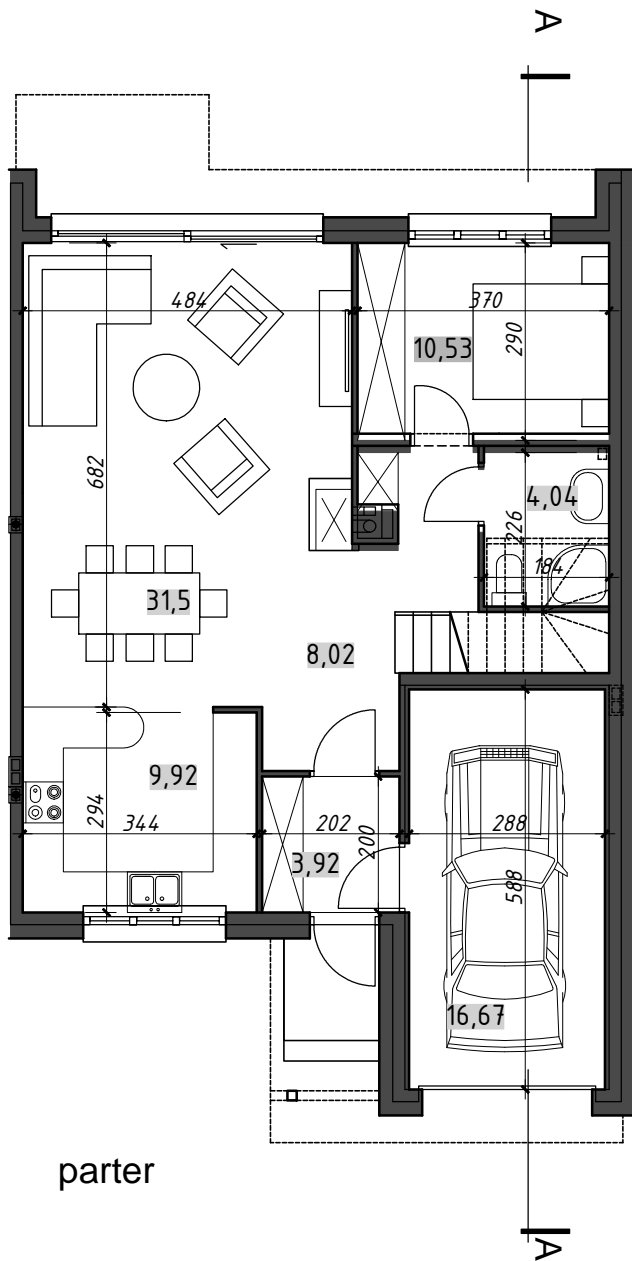
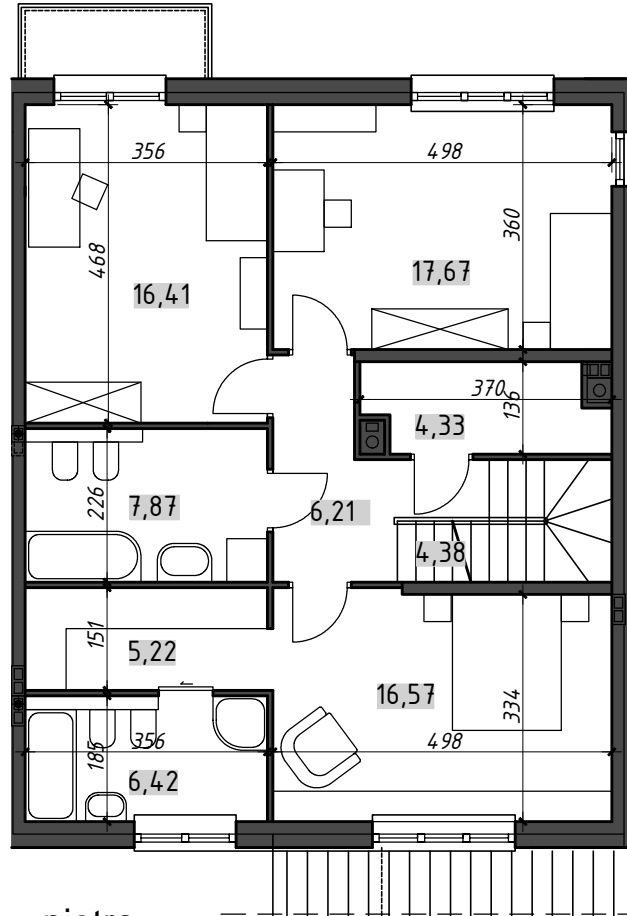


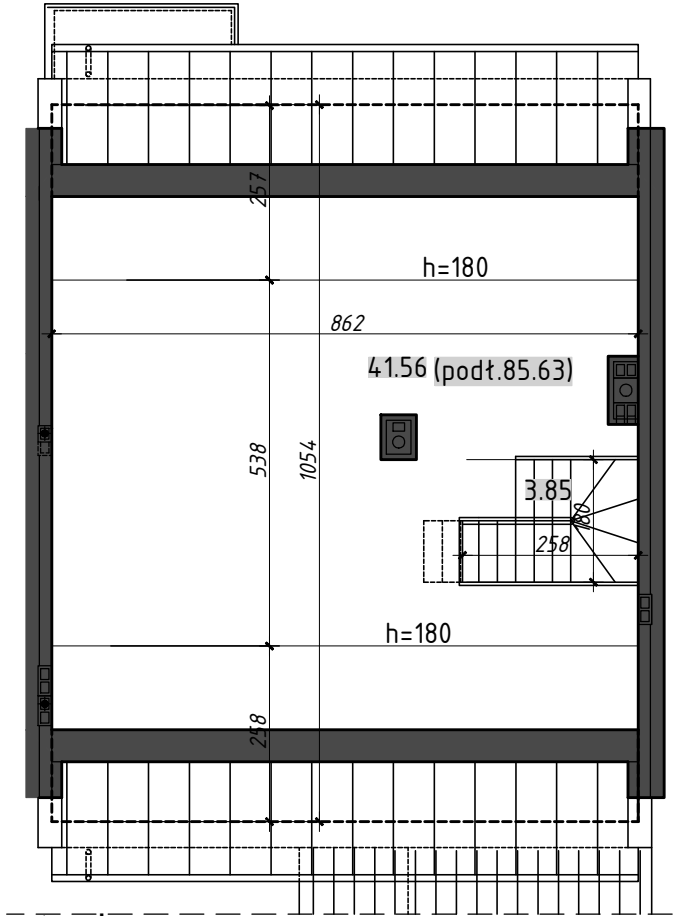
# OSIEDLE DOMÓW SZEREGOWYCH JÓZEFOSŁAW UL. OGRODOWA 19A



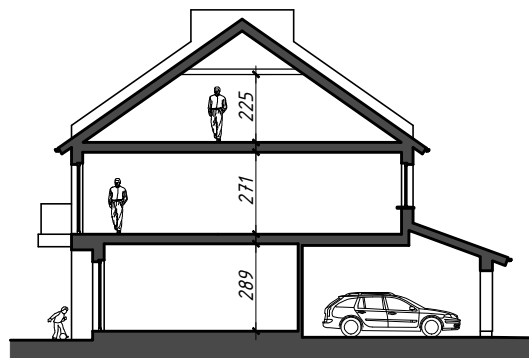
parter



piętro



strych



przekrój A-A (schemat)

## DOM TYP (B1)

**ZESTAWIENIE POWIERZCHNI:**

parter	67,93m <sup>2</sup>
piętro	85,08m <sup>2</sup>
strych	45,41 (89,48)m <sup>2</sup>
garaż	16,67m <sup>2</sup>
<b>RAZEM</b>	<b>215,09m<sup>2</sup> (259,16m<sup>2</sup>)</b>
balkon	2,94m <sup>2</sup>