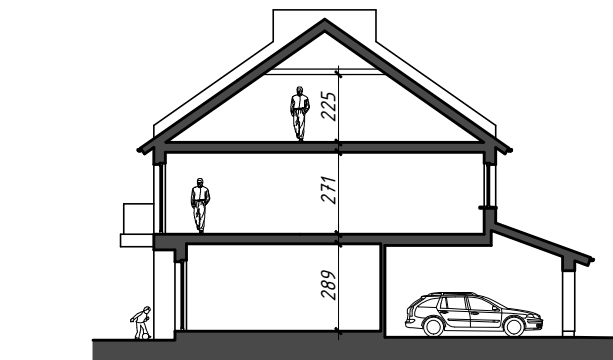
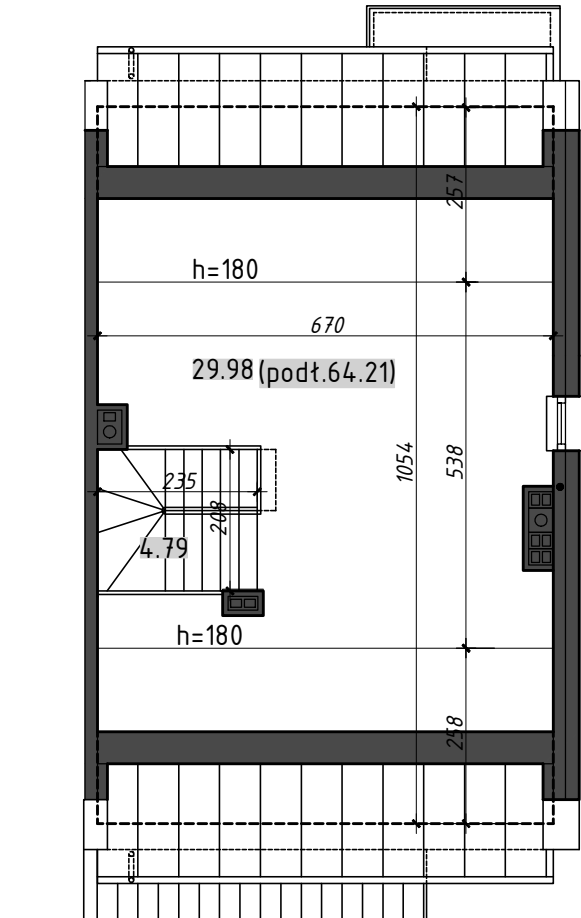
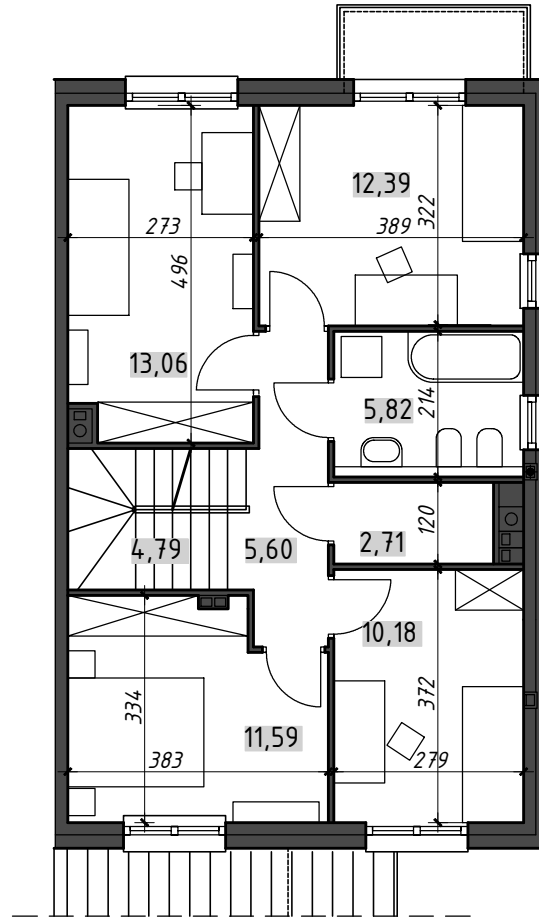
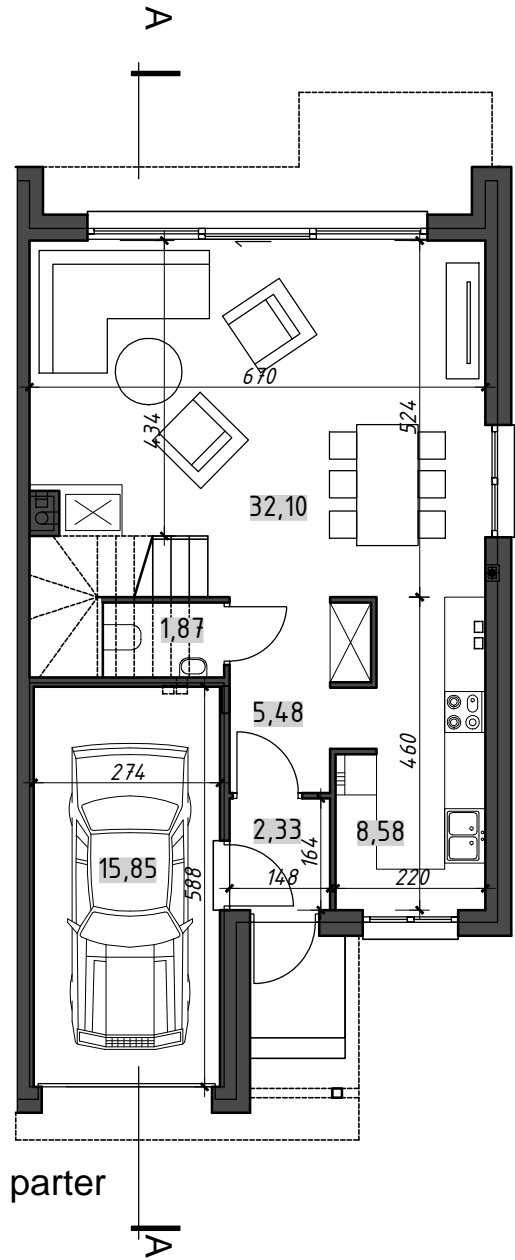


OSIEDLE DOMÓW SZEREGOWYCH JÓZEFOSŁAW UL. OGRODOWA 19A



DOM TYP (A2)

ZESTAWIENIE POWIERZCHNI:

parter	50,36m ²
piętro	66,15m ²
strych	34,77m ² (69,00m ²)
garaż	15,85m ²
RAZEM	167,13m² (201,36m²)
balkon	2.94m ²